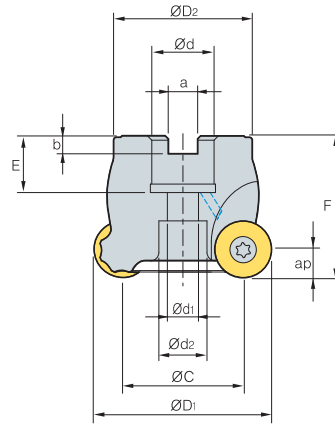
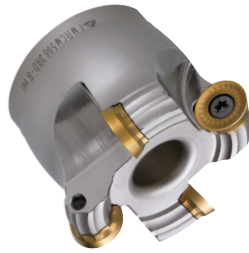


FMRC(M)5000



• AR: 5°
• RR: -5°

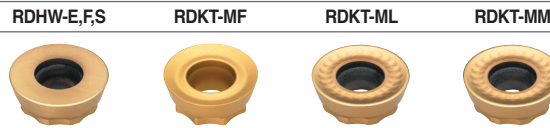
(mm)

Designation		ØD	ØC	ØD2	Ød	a	b	E	F	Ød1	Ød2	ap		
FMRCM	5050HRD	3	50	34	42	22	10.4	6.3	20	50	11	16.5	8.0	0.4
	5063HRD	4	63	47	49	22	10.4	6.3	20	50	11	18	8.0	0.6
	5063HRD-H	5	63	47	49	22	10.4	6.3	20	50	11	18	8.0	0.6
FMRC (FMRCM)	5080HRD	5	80	64	57	25.4 (27)	9.5 (12.4)	6 (7.0)	25 (23)	50 (50)	14	20	8.0	0.9
	5080HRD-H	6	80	64	57	25.4 (27)	9.5 (12.4)	6 (7.0)	25 (23)	50 (50)	14	20	8.0	0.9
	5100HRD	6	100	84	67	31.75 (32)	12.7 (14.4)	8 (8)	33 (25)	63 (50)	18	26	8.0	1.9 (1.4)
	5100HRD-H	7	100	84	67	31.75 (32)	12.7 (14.4)	8 (8)	33 (25)	63 (50)	18	26	8.0	1.9 (1.4)
	5125HRD	7	125	109	87	38.1 (40)	15.9 (16.4)	10 (9)	35 (29)	63 (63)	22	32	8.0	3
5125HRD-H	8	125	109	87	38.1 (40)	15.9 (16.4)	10 (9)	35 (29)	63 (63)	22	32	8.0	3	

Note) It's general that you measure of inner diameter when the diameter of FMRC/FMRCM is Ø50~Ø63

()Metric size

Available inserts



Designation	Cermet		Coated											Uncoated		page		
	CN2000	CN80	NCM325	NC5330	NCM535	NCM545	PC2505	PC2010	PC3600	PC3700	PC6510	PC9530	PC9540	PC5300	PC5400		ST30A	H01
RDHW	1605MOE																	E15
	1605MOF																	
	1605MOS																	
RDKT	1605M0-MM								●									E16
	1605M0-MF																	
	1605M0-ML																	

Available arbors

Designation	Ød	NC arbors
FMRCM	5050HRD	BT□□-FMC22-□□
	5063HRD	
	5063HRD-H	
FMRC (FMRCM)	5080HRD	BT□□-FMA/FMB25.4-□□
	5080HRD-H	BT□□-FMB/FMC27-□□
	5100HRD	BT□□-FMA31.75-□□
	5100HRD-H	BT□□-FMC32-□□
	5125HRD	BT□□-FMA/FMB38.1-□□
	5125HRD-H	BT□□-FMB/FMC40-□□

Parts

Specification		
Ø50~Ø125	FTGA0513-P	TW20-100

Available inserts E15, E16 Available arbors and bolt E400~E402

